

*Demo
prepared by :*



*Demo
sponsored by:*



*WELCOME
to
The Land Use Database :*

Demo-3 : Settings

Shown is how to define the Settings

Emphasis is put on the following software aspects :

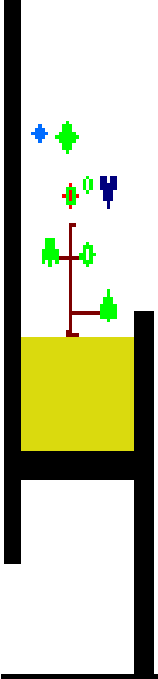
- 1 Start the Data Entry module and view the Opening Screens.**
- 2 Screen aspects to define the Settings.**
- 3 The Common settings.**
- 4 The Data Entry Module settings.**

Software aspect no.-1 :


- 1 **Start the Data Entry module and view the Opening Screens.**
- 2 Screen aspects to define the Settings.
- 3 The Common settings.
- 4 The Data Entry Module settings.

First of all, select the **Data Entry** option of the **Main Menu**.

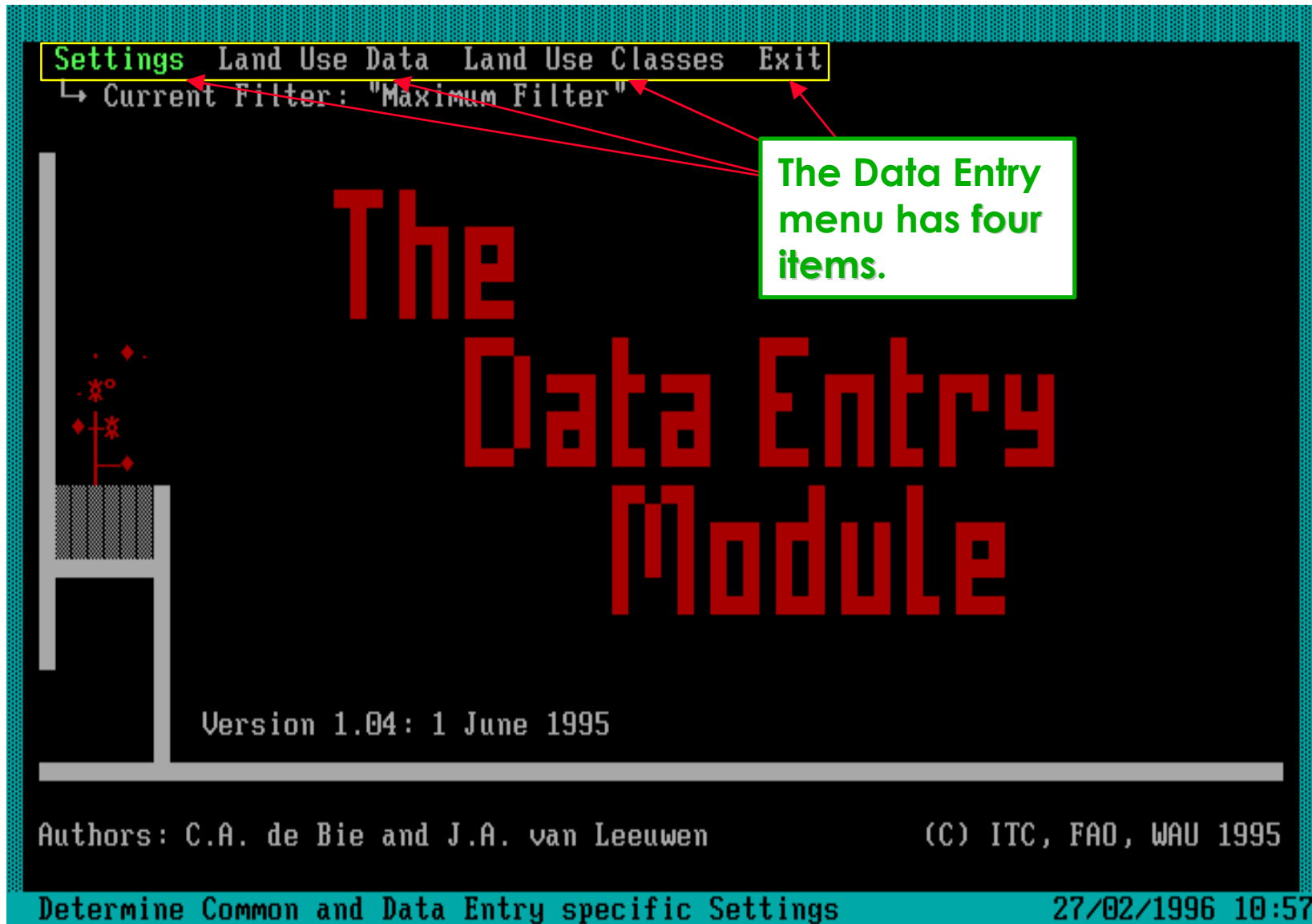
The Land Use Database



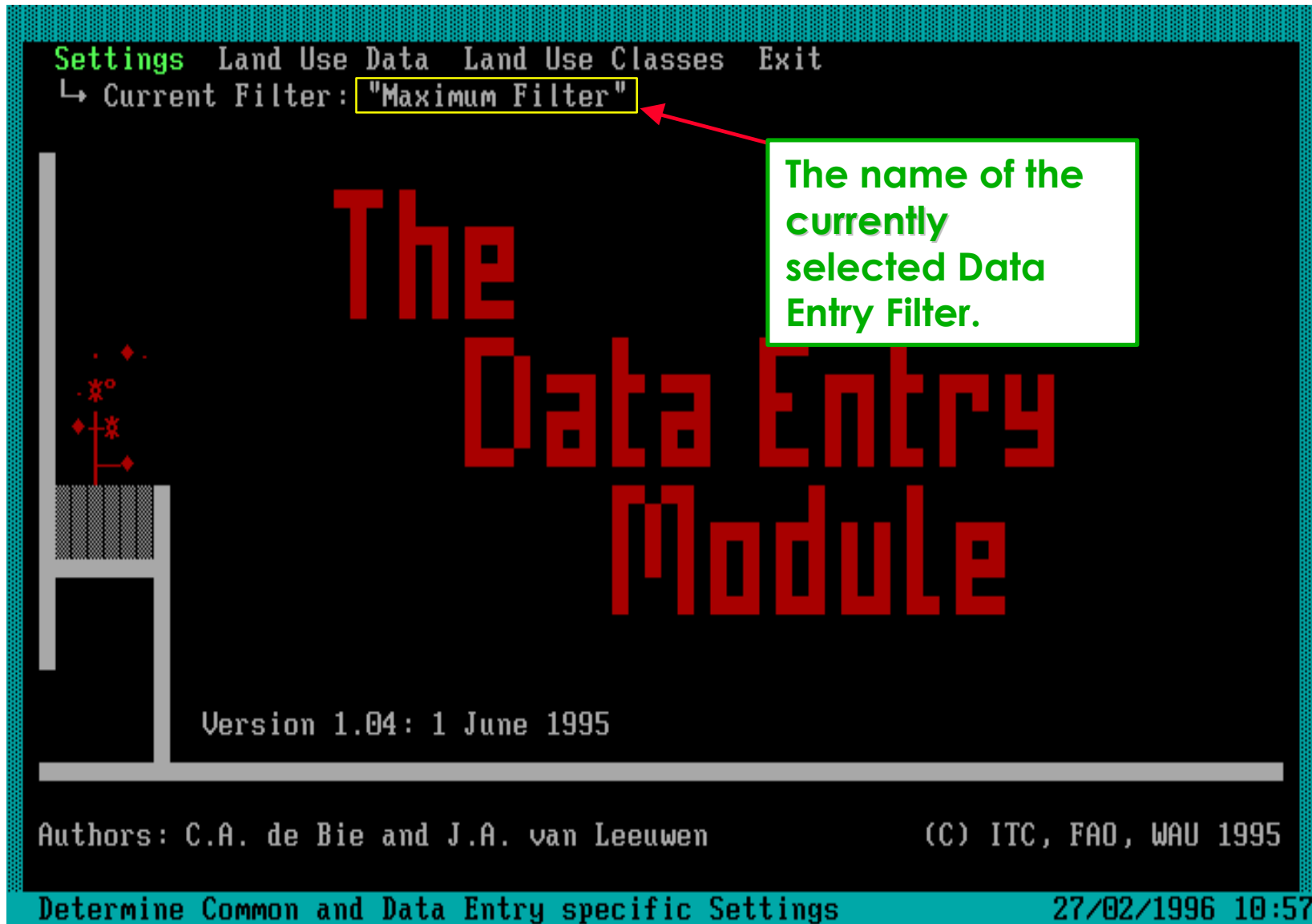
```
«Select a Module»
Glossary      - Glossary; Filters; Repair; Backup/Restore
Data Entry    - Land Use Data; Land Use Classes; Settings
Query         - Search, Retrieve and Export stored Data
Exit <Esc>    - Return to the Operating System
```

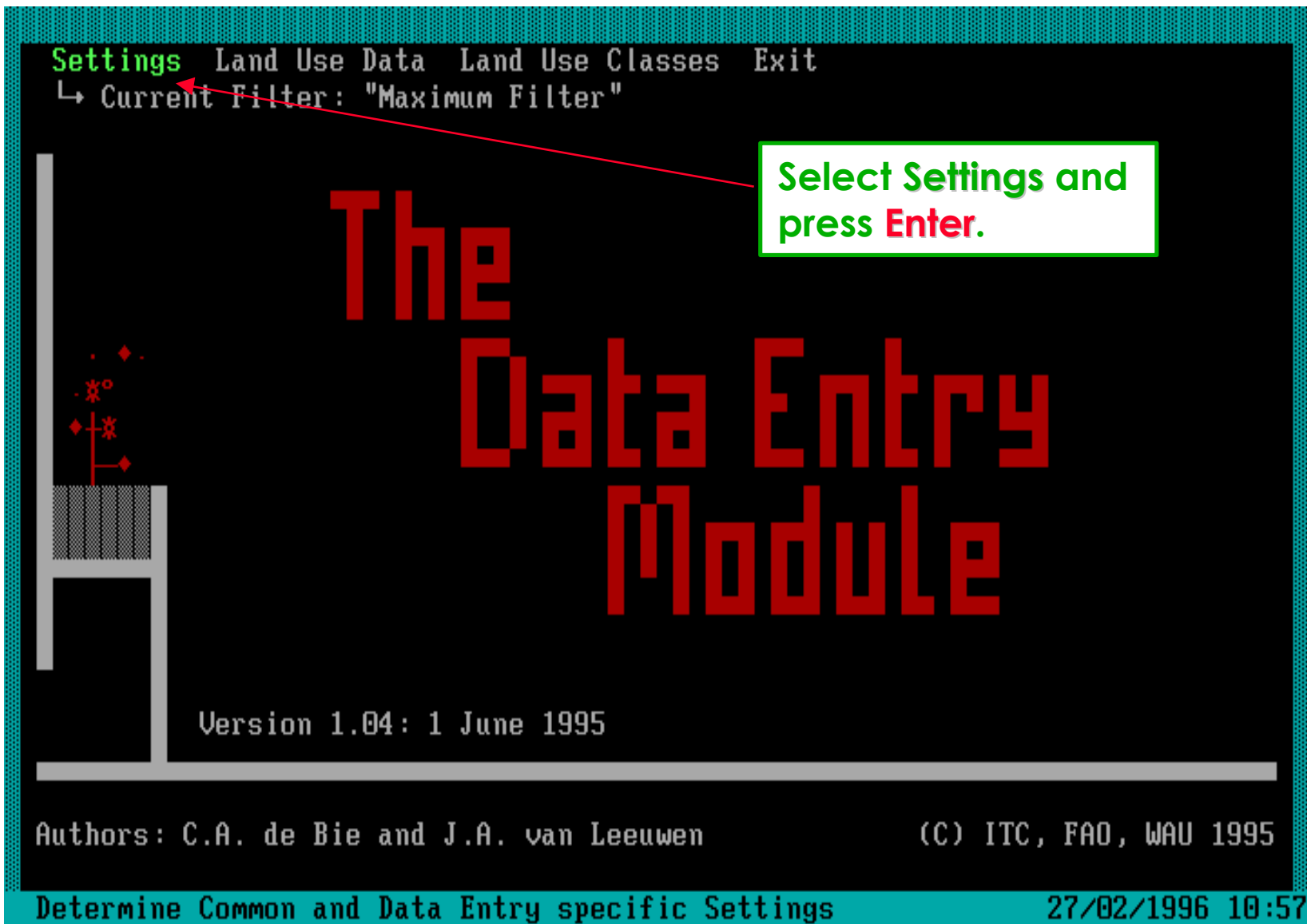


This is the main menu of the **Data Entry Module**.



The name of the currently selected **Data Entry Filter** is reported.





Use **Settings** to **modify** software settings.

Software aspect no.-2 :

- 1 Start the Data Entry module and view the Opening Screens.
- 2 **Screen aspects to define the Settings.**
- 3 The Common settings.
- 4 The Data Entry Module settings.

The **Settings** screen consists of two groups of settings.

```
«Settings»
—Common Settings—
File with Colour Settings      CO1STD.COL
Report Width                   80
Coordinates                   Decimals
Sound                          Yes
—Settings for Data Entry Module—
Data Entry Filter (see Glossary Module)  Maximum Filter
Structure of One Dataset           x Site-ID's : x LUS Descriptions
Dataset-Display Selection: Admin.Area  » -
Dataset-Display Selection: Project     » -
Dataset-Display Sort Order          Administrative Area
Date Format                          dd/mm/yyyy (27/02/1996)
UTM Ellipsoid/Spheroid             Airy 1849
«13»
```

Common Software Settings

Settings for the Data Entry Module

F1=Help F10=Save Enter=Edit

The **Settings** screen consists of prompts and their answers.

```
«Settings»
—Common Settings—
File with Colour Settings      CO1STD.COL
Report Width                   80
Coordinates                   Decimals
Sound                          Yes
—Settings for Data Entry Module—
Data Entry Filter (see Glossary Module)  Maximum Filter
Structure of One Dataset          x Site-ID's : x LUS Descriptions
Dataset-Display Selection: Admin.Area  » -
Dataset-Display Selection: Project     » -
Dataset-Display Sort Order          Administrative Area
Date Format                          dd/mm/yyyy (27/02/1996)
UTM Ellipsoid/Spheroid             Airy 1849
«13»
```

List of all possible Settings (prompts)

Settings as presently defined

F1=Help F10=Save Enter=Edit

Software aspect no.-3 :

- 1 Start the Data Entry module and view the Opening Screens.
- 2 Screen aspects to define the Settings.
- 3 **The Common settings.**
- 4 The Data Entry Module settings.

File with Colour Settings:

To select a Colour Scheme or to get Black & White display.

```
«Settings»
—Common Settings—
File with Colour Settings →
Report Width      80
Coordinates      De
Sound            Ye
—Settings for Data Entry Module—
Data Entry Filter (see Glossary Module) Ma
Structure of One Dataset      x Site-ID's : x LUS Descriptions
Dataset-Display Selection: Admin.Area » -
Dataset-Display Selection: Project  » -
Dataset-Display Sort Order      Administrative Area
Date Format                    dd/mm/yyyy (27/02/1996)
UTM Ellipsoid/Spheroid        Airy 1849
«13»
```

«Select File with Colour Settings»

```
None
BWSTD.COL
CO1STD.COL
CO2STD.COL
LCD.COL
```

For B&W portable PC s.

You can define your own Colour Settings File (see Appendix-2 of the Manual)

Report Width :

To select a Report Width of printed texts (to screen, file, or printer).

```
«Settings»
—Common Settings—
File with Colour Settings      CO «Select Report Width»
Report Width                   → 80
Coordinates                   De 132
Sound                          Ye 160
                               240
—Settings for Data Entry Module—
Data Entry Filter (see Glossary Module) Ma «4»
Structure of One Dataset      x Site-ID's : x LUS Descriptions
Dataset-Display Selection: Admin.Area » -
Dataset-Display Selection: Project » -
Dataset-Display Sort Order    Administrative Area
Date Format                    dd/mm/yyyy (27/02/1996)
UTM Ellipsoid/Spheroid       Airy 1849
                               «13»
```

Only after printing 80 to 240 characters, the software will add a hard return.

Coordinates :

To select a Coordinates Format for data entry, printing, and display.

```
«Settings»
—Common Settings—
File with Colour Settings      CO1STD.COL
Report Width                  80
Coordinates                    Degrees, Minutes, Seconds (° ' ")
Sound                         Ye Decimals
—Settings for Data Entry Module—
Data Entry Filter (see Glossary Module)  Maximum Filter
Structure of One Dataset             x Site-ID's : x LUS Descriptions
Dataset-Display Selection: Admin.Area  » -
Dataset-Display Selection: Project     » -
Dataset-Display Sort Order            Administrative Area
Date Format                           dd/mm/yyyy (27/02/1996)
UTM Ellipsoid/Spheroid               Airy 1849
«13»
```

The software will **always** save coordinates in the decimal Lat-Long system.

Sound :

To define if a Sound Warning must be given upon Errors or Warnings.

```
«Settings»
—Common Settings—
File with Colour Settings      CO1STD.COL
Report Width                   80
Coordinates                    Decimals
Sound                          No
—Settings for Data Entry Module—
Data Entry Filter (see Glossary Module)  Maximum Filter
Structure of One Dataset              x Site-ID's : x LUS Descriptions
Dataset-Display Selection: Admin.Area  » -
Dataset-Display Selection: Project     » -
Dataset-Display Sort Order            Administrative Area
Date Format                            dd/mm/yyyy (27/02/1996)
UTM Ellipsoid/Spheroid                Airy 1849
«13»
```

Press **Enter** to change from
No to **Yes** and vice versa.

F1=Help F10=Save Enter=Edit

Software aspect no.-4 :

- 1 Start the Data Entry module and view the Opening Screens.
- 2 Screen aspects to define the Settings.
- 3 The Common settings.
- 4 **The Data Entry Module settings.**

Data Entry Filter :

To select a filter to use during entering Land Use Data / Land Use Classes.

```
«Settings»
—Common Settings—
File with Colour Settings      CO1STD.COL
Report Width                   80
Coordinates                   Decimals
Sound                          Yes
—Settings for Data Entry Module—
Data Entry Filter (see Glossary Module) → «Data Entry Filters»
Structure of One Dataset       x Minimum Filter
Dataset-Display Selection: Admin.Area » Min.Filter+Periods
Dataset-Display Selection: Project » FAO/ITC Trainings Course
Dataset-Display Sort Order     Ad «4»
Date Format                    dd/mm/yyyy (27/02/1996)
UTM Ellipsoid/Spheroid        Airy 1849
«13»
```

The filter selection can be changed at any time.

All defined Data Entry Filters will be available for selection.

Print a filter to the screen if you want to see its details.

Structure of One Dataset :

To select which ones of the first three Data Entry Screens must be merged.

```

«Settings»
—Common Settings—
File with Colour Settings      CO1STD.COL
Report Width                  80
Coordinates                   Decimals
Sound                         Yes
—Settings for Data Entry Module—
Data Entry Filter (see Glossary Module) Ma
Structure of One Dataset      » x Site-ID's : x LUS Descriptions
Dataset-Display Selection: Admin.Area » x Site-ID's : 1 LUS Description
Dataset-Display Selection: Project  » 1 Site-ID : x LUS Descriptions
Dataset-Display Sort Order      Ad 1 Site-ID : 1 LUS Description
Date Format                    dd
                                «4»
                                Airy 1849
                                «13»
    
```

The first 3 Levels can relate to each other in 4 ways:

<u>L1</u>	<u>L2</u>	<u>L3</u>	<u>L4</u>
1	: x	: x	: x
1	: x	: 1	: x
1	: 1	: x	: x
1	: 1	: 1	: x

Level-2

Level-3

Further details about this setting are given in Demo-5.

Structure of One Dataset :

To select which ones of the first three Data Entry Screens must be merged.

```
«Settings»
—Common Settings—
File with Colour Settings      CO1STD.COL
Report Width                  80
Coordinates                   Decimals
Sound                         Yes
—Settings for Data Entry Module—
Data Entry Filter (see Glossary Module) Ma «Structure of One Dataset»
Structure of One Dataset      → x Site-ID's : x LUS Descriptions
Dataset-Display Selection: Admin.Area » x Site-ID's : 1 LUS Description
Dataset-Display Selection: Project » 1 Site-ID : x LUS Descriptions
Dataset-Display Sort Order    Ad 1 Site-ID : 1 LUS Description
Date Format                   dd «4»
UTM Ellipsoid/Spheroid       Airy 1849 «13»
```

This setting can be changed at **any** time and is independent of the data structure of already entered Land Use Datasets.

Further details about this setting are given in Demo-5.

Dataset - Display Selection: Admin.Area :

To select by Administrative Area which Land Use Datasets to display.

```
«Settings»
—Common Settings—
File with Colour Settings      CO1STD.COL
Report Width                   80
Coordinates                   Decimals
Sound                          Yes
—Settings for Data Entry Module—
Data Entry Filter (see Glossary Module)
Structure of One Dataset
Dataset-Display Selection: Admin.Area → «Administrative Areas»
Dataset-Display Selection: Project
Dataset-Display Sort Order
Date Format
UTM Ellipsoid/Spheroid
Africa »
Asia »
Australasia; SW-Pacific »
Europe »
North,Centr America; W Indies »
Near-East »
S-America »
«7»
```

During Data Entry **only** the Land Use Datasets of the selected **Administrative Area** branch will be shown.

The Administrative Areas Glossary Tree

Dataset - Display Selection: Project :

To select by Project which Land Use Datasets to display.

```
«Settings»
—Common Settings—
File with Colour Settings      CO1STD.COL
Report Width                   80
Coordinates                   Decimals
Sound                          Yes
—Settings for Data Entry Module—
Data Entry Filter (see Glossary Module)  Minimum Filter
Structure of One Dataset
Dataset-Display Selection: Admin.Area    «Projects»
Dataset-Display Selection: Project      LREP-II/b
Dataset-Display Sort Order              «2»
Date Format                             dd/mm/yyyy (27/02/1996)
UTM Ellipsoid/Spheroid                 Airy 1849
«13»
```

During Data Entry **only** the Land Use Datasets of the selected **Project** branch will be shown.

The Projects Glossary Tree

Dataset - Display Sort Order :

To select the Sort Order of displayed Land Use Datasets.

```
«Settings»
—Common Settings—
File with Colour Settings      CO1STD.COL
Report Width                   80
Coordinates                    Decimals
Sound                          Yes
—Settings for Data Entry Module—
Data Entry Filter (see Glossary Module)  Minimum Filter
Structure of One Dataset          x Site-ID's : x LUS Descriptions
Dataset-Display Selection: Admin.Area  Africa, » -
Dataset-Display Selection: Project     FA «Dataset-Display Sort Order»
Dataset-Display Sort Order           Administrative Area
Date Format                         dd Project Code
UTM Ellipsoid/Spheroid             Ai «2»
«13»
```


UTM Ellipsoid / Spheroid :

To select the UTM Ellipsoid for data entry, printing, and display.

«Settings»

—Common Settings—
File with Colour Settings
Report Width
Coordinates
Sound

—Settings for Data Entry Module—
Data Entry Filter (see Glossary Module)
Structure of One Dataset
Dataset-Display Selection: Admin.Area Africa, » -
Dataset-Display Selection: Project FAO, BOT/91/001, » -
Dataset-Display Sort Order Administrative Area
Date Format

«Select UTM Ellipsoid/Spheroid——Equat.Rad.—Polar Rad.»

UTM Ellipsoid/S	Equat.Rad.	Polar Rad.
Airy 1849	6377563.400	6356256.900
Australian 1965	6378160.000	6356774.700
Bessel (Norway)	6377492.077	6356079.000
Bessel 1841	6377397.200	6356079.000
Clarke 1858	6378293.000	6356619.000
Clarke 1866	6378206.400	6356583.800
Clarke 1880	6378249.100	6356514.900
Clarke IGN 1880	6378249.200	6356515.000
Delambre 1810	6376428.000	6355598.000

«33»

F1=Help

It is essential when entering UTM coordinates (from topo-maps), that the proper Ellipsoid is specified here !!

Coordinates are always stored as Lat-Long !!

Many (33) options are available.

Contact ITC for not included options.

This is the end of the demo on Settings.

Settings Land Use Data Land Use Classes Exit
↳ Current Filter: "Maximum Filter"

The Data Entry Module

Version 1.04: 1 June 1995

Authors: C.A. de Bie and J.A. van Leeuwen (C) ITC, FAO, WAU 1995

Determine Common and Data Entry specific Settings 27/02/1996 10:57

Settings is now fully discussed.



End of Demo-3 Thank YOU

